

**TRIGON HEADQUARTERS  
AND  
OPERATIONS CENTER  
RICHMOND, VIRGINIA  
MONTHLY PROGRESS REPORT**



**Steel viewed from the south.**



**Lower Level slab and trench.**



**Steel viewed from the north.**



**Backfill and waterproofing**

## General Conditions



- Weekly progress meetings for sub contractors occur on Monday afternoons at 1:30. Coordination issues and a six-week look-ahead schedule are reviewed.
- Project team review meetings occur on a bi-weekly basis followed by mechanical, electrical and plumbing (MEP) coordination and Network Design/Data Center coordination meetings.
- Interior Design and “Value Engineering” (VE) meetings occur bi-weekly on the alternate weeks. Results from the recent lighting VE meetings and further budgeting of interiors and site items should yield cost savings for the project. A budget update is expected shortly.
- There have been 245 days worked on the project without a significant injury or occurrence.
- The elevator and escalator shop drawings from Thyssen/Krupp are in progress.



- Addendum #7 for the creation of the Uninterrupted Power Supply (UPS) room and back-up power to individual desktops was issued and retracted with the decision by Trigon not to proceed with the UPS system. Addendum #8 is expected on May 22 and will contain architectural coordination issues and “Value Engineering” items.

## Site work

- Excavations of individual pier footings for the central plant are approximately 10% complete.
- The pumps for dewatering the central plant and parking deck are still in operation. Portions of the dewatering piping serving HQ2 have been removed.
- Pier excavations to the north end of the central plant have been dry and not required pumping. Water is still present at the base of deep foundations on the south end of the central plant and required “hand” pumping prior to installation of pier footings.

## Concrete

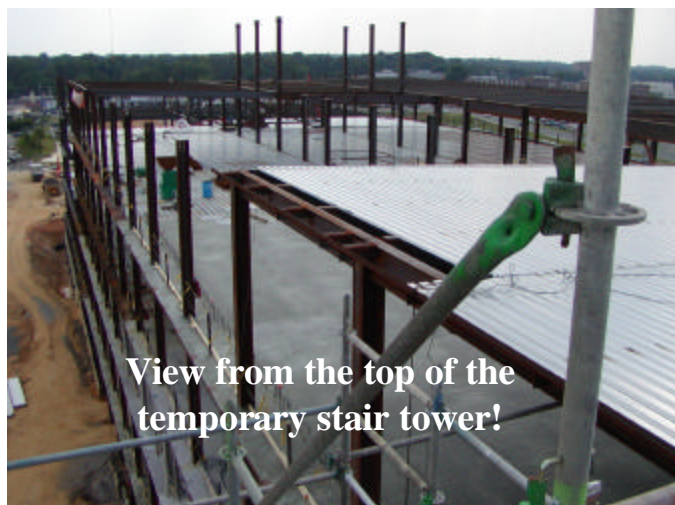
- Concrete pile caps and the utility trench are approximately 30% complete. Foundation walls for HQ2 are complete.
- Steel reinforcing bars are onsite for 70% of the central plant foundation work.
- Waterproofing, installation of foundation drains and limited backfill along the west and north walls (k-line and l-line) are 40% complete.
- Concrete floor slab pours over steel decking have started on the first thru fourth floors of HQ2 and are approximately 50% complete with 125,000 sf in place. The concrete slab on grade on the lower level is over 30% complete.
- Caisson installation for the parking deck has slowed slightly, to a rate of 3 per day, due to the presence of hard rock and is approximately 60% complete.
- Installation of caisson caps in the parking deck has started and is 5% complete.
- Masonry knee walls providing a base for the raised floor slabs in the building cores will start in late May.

The Parking Deck space used to layout steel beams for HQ2.



### Structural Steel

- The steel erection crane is approximately 90% complete with setting steel and 75% of the steel decking is installed. Steel embed plates supporting the precast concrete are being set into the floor slabs prior to concrete pours.
- The 200-ton crane is nearing completion of the south portion of the building and will relocate to set the penthouse and roof steel on the north section of HQ2.
- Fireproofing of the steel has started and is 20% complete.
- Interior stairs #2 and #3 have been approved and are in fabrication. Installation of the stairs in late May will eliminate the need for the temporary stair in the northwest corner of HQ2.



View from the top of the temporary stair tower!

### Drywall

The contract for the drywall has been awarded to Capital interiors.

### Building Envelope

- Final shop drawings for curtain wall/storefront from Harmon, Inc. are in progress with portions of the glass and aluminum framing released for fabrication.
- Precast concrete drawings and the first wall panels by Gate Concrete have been reviewed and approved by the project team.

### Electrical

- Feeder cabling from offsite has been installed to HQ2.
- Conduits, bus duct sleeves and other penetrations have been installed up through the fourth floor.
- Temporary power and lighting is installed on the stair tower scaffolding and is in progress throughout HQ2.

### Mechanical

- Plastic laminated Raised Access Flooring panels have been purchased at a bulk rate from Irving Access Flooring. The laminate will be removed in areas with carpeting.
- Cooling towers are onsite and scheduled for installation in the roof penthouse in late May.
- Future piping stubs, which can be waterproofed, are being installed near column K1.

### Plumbing

- Underground rough-in for stormwater, communication lines and sanitary sewer lines in HQ2 are complete anticipating setting the under slab drainage system and waterproofing.
- Temporary utility lines remain active in the central plant/loading dock area pending installation of the foundations for this area. Installation of the ejector pumps for the sanitary sewer system is scheduled for June.

Permitting/Approvals

- Henrico County has reconsidered their requirement for the source of “offsite water” and may allow fire sprinkler water to come from the City of Richmond.

Building Design

- Virginia Department of Transportation (VDOT) is in the process of completing the roadway design for the signalized intersection of Staples Mill Road and Marshall Street.
- The Lower Level interior drawings were issued on May 10 for pricing and permitting. The 1<sup>st</sup> floor will be issued in June 4<sup>th</sup> floor in September, and 3<sup>rd</sup> and 2<sup>nd</sup> floors in October. The final engineering drawings for the data center will be issued mid September.

Next Month’s Activities

- Construction of the post-tensioned concrete slab in the terrace over the central plant is expected to start in July.
- Precast concrete panels for the Parking Deck are anticipated on site upon the completion of the foundations in June.
- Mechanical, Electrical and Plumbing foundation rough-in work will continue.
- Precast wall panels beginning on the west side of HQ2 are anticipated on site in early July.
- Installation of the storefront and Curtainwall is expected in late July.
- The structural steel design for the connector will be complete by 5/27 for pricing. Consideration will be given towards erecting the steel while HQ1 is still occupied.
- Trigon announces the merger with Anthem Inc. of Indianapolis. The project will proceed as planned.



Aerial view of Trigon Project site.